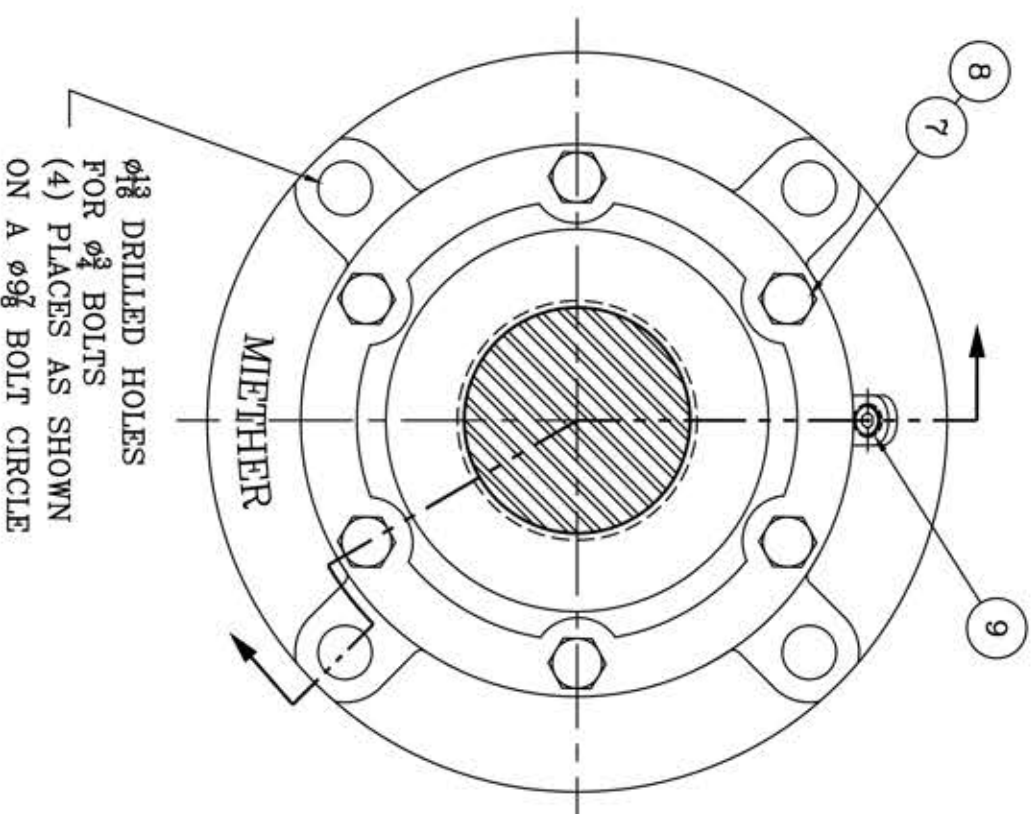
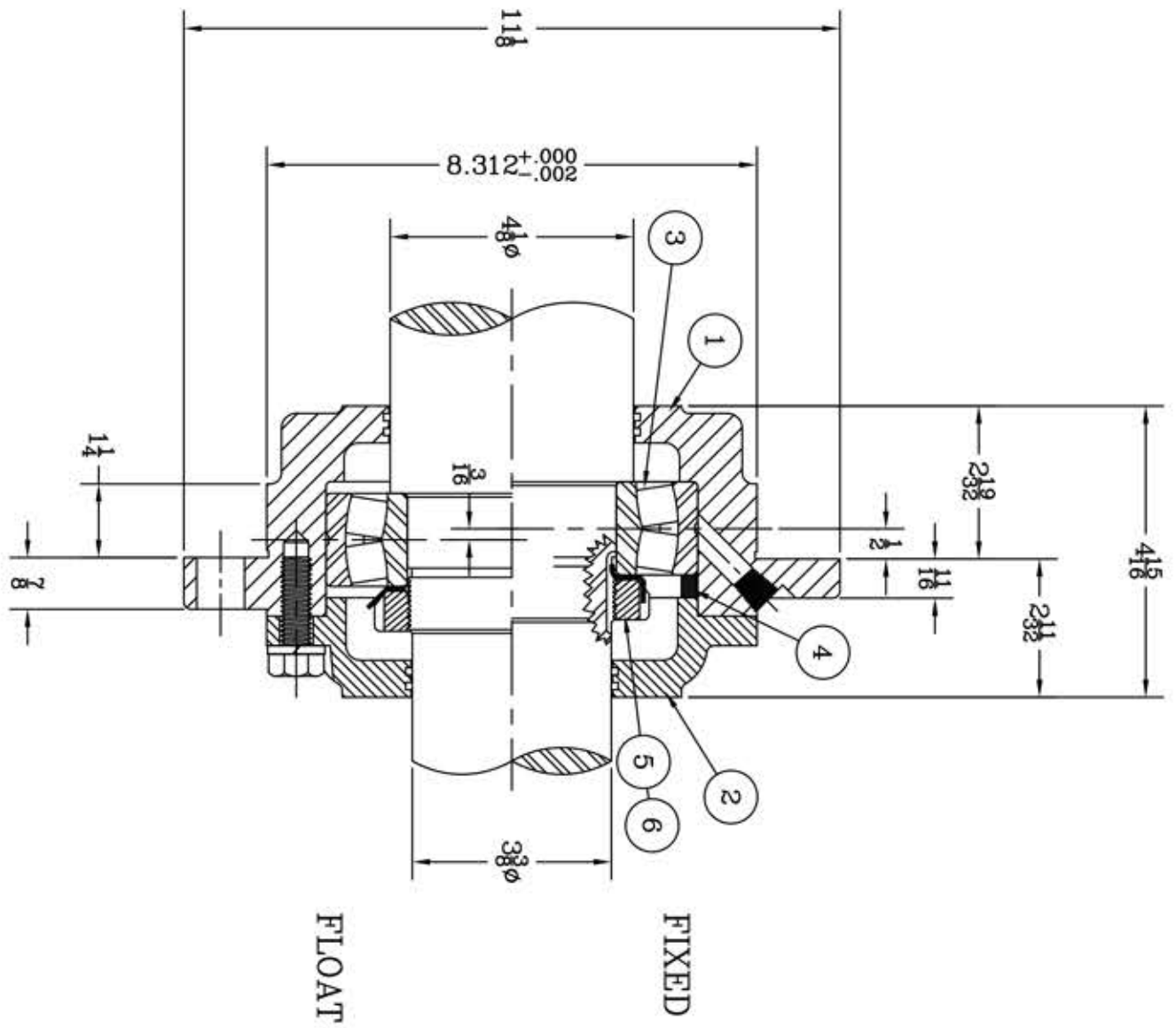


This drawing is the sole property of Miether Bearing Products and contains confidential and proprietary information. It is being provided to you for your use and may not be disclosed to any third party or used for any other purpose without Miether's prior written consent. The [materials] must be returned to the Company upon its demand. Your acceptance of these materials constitutes your acceptance of the foregoing terms.

C-17118



ITEM	DESCRIPTION	DETAIL	REQUIRED
1	HOUSING HL-218	C-16710	1 1
2	ENDCAP KL-218	C-16711	1 1
3	SPHERICAL ROLLER BEARING	22218/W-33	1 1
4	STABILIZING RING SR-18-15	A-10601	1 0
5	LOCKNUT AN-18	B-10783	1 1
6	LOCKWASHER W-18		1 1
7	CAP BOLT HEX. HEAD	5/16-13 NC x 1 1/2	6 6
8	LOCKWASHER	1/2 SPLIT	6 6
9	PIPE PLUG	1/4-18 NPT	1 1

REDRAWN ON COMPUTER  
AR per KAB  
1-21-04

REVISIONS

SYMBOL	DESCRIPTION
✓	16
✓	32
✓	63
✓	125
✓	250
✓	500
✓	1000

TOLERANCE: UNLESS OTHERWISE SPECIFIED  
FRACTIONS  $\pm 1/32"$  ANGLES  $\pm 0^\circ 30'$   
DECIMALS  $\pm .005"$  WELD  $\pm 1/16"$   
CASTING  $\pm 1/16"$   
A.I.S.I. STANDARD FINISHES

AN ALCO INDUSTRIES COMPANY  
BEARING PRODUCTS  
ODDESSA, TX. USA

FCL 22218	04-02 x 03-06
ASSEMBLY DRAWING	
SCALE HALF	ASSEMBLY NO.
DRAWN CJ	
DATE 9/28/76	DRAWING NO.
CHK:	C-17118